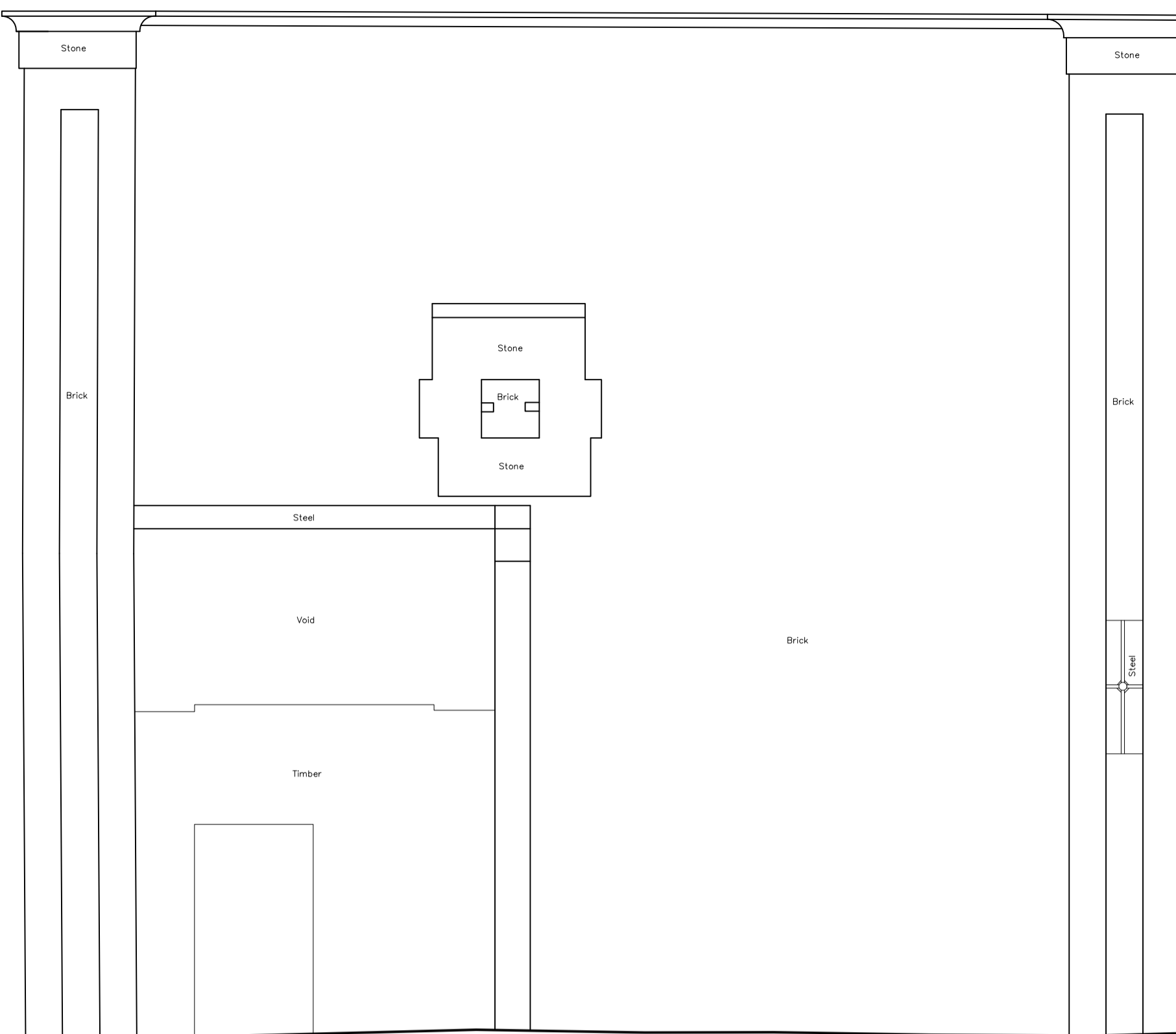




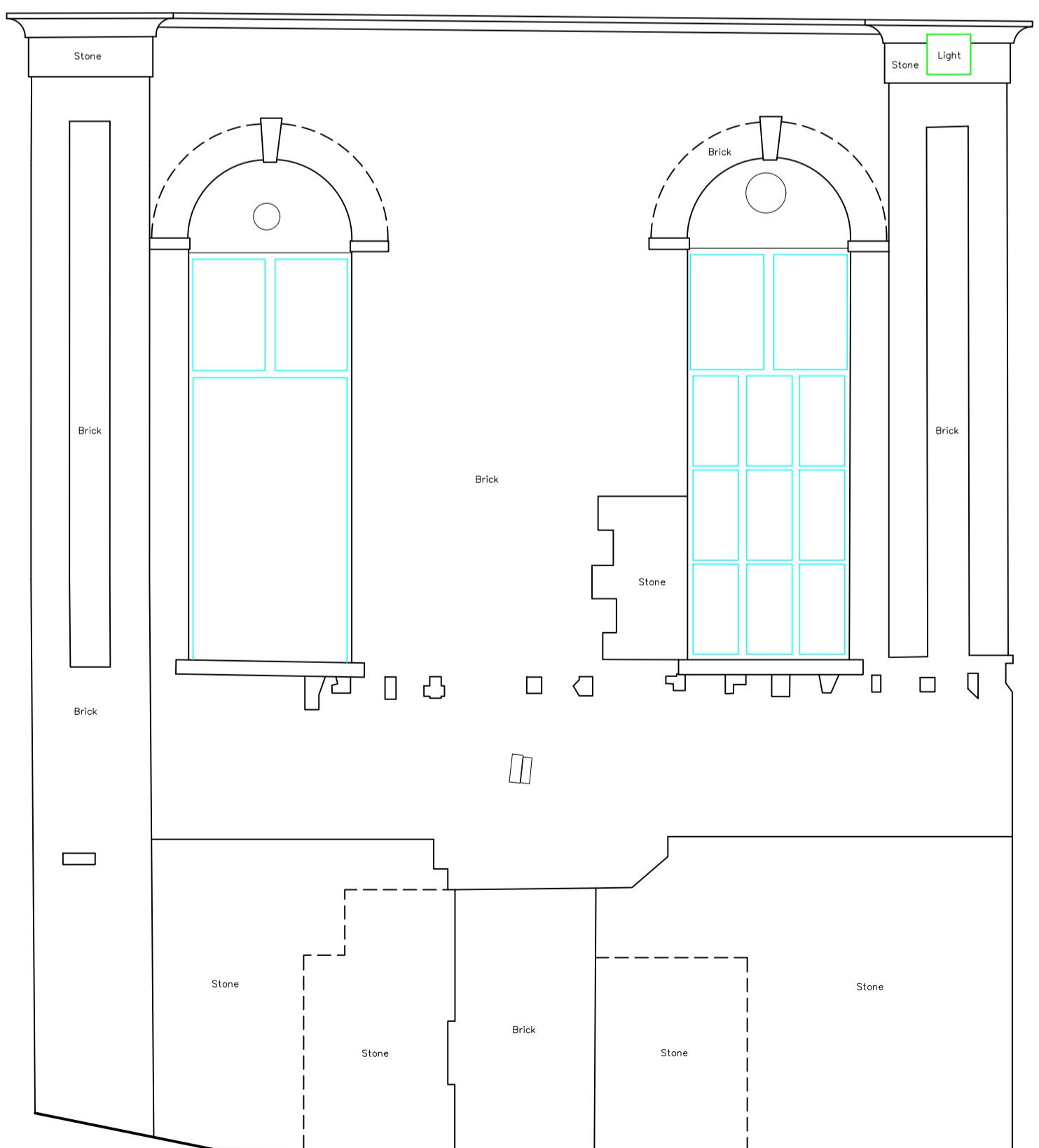
Datum 105.00m

Elevation 1



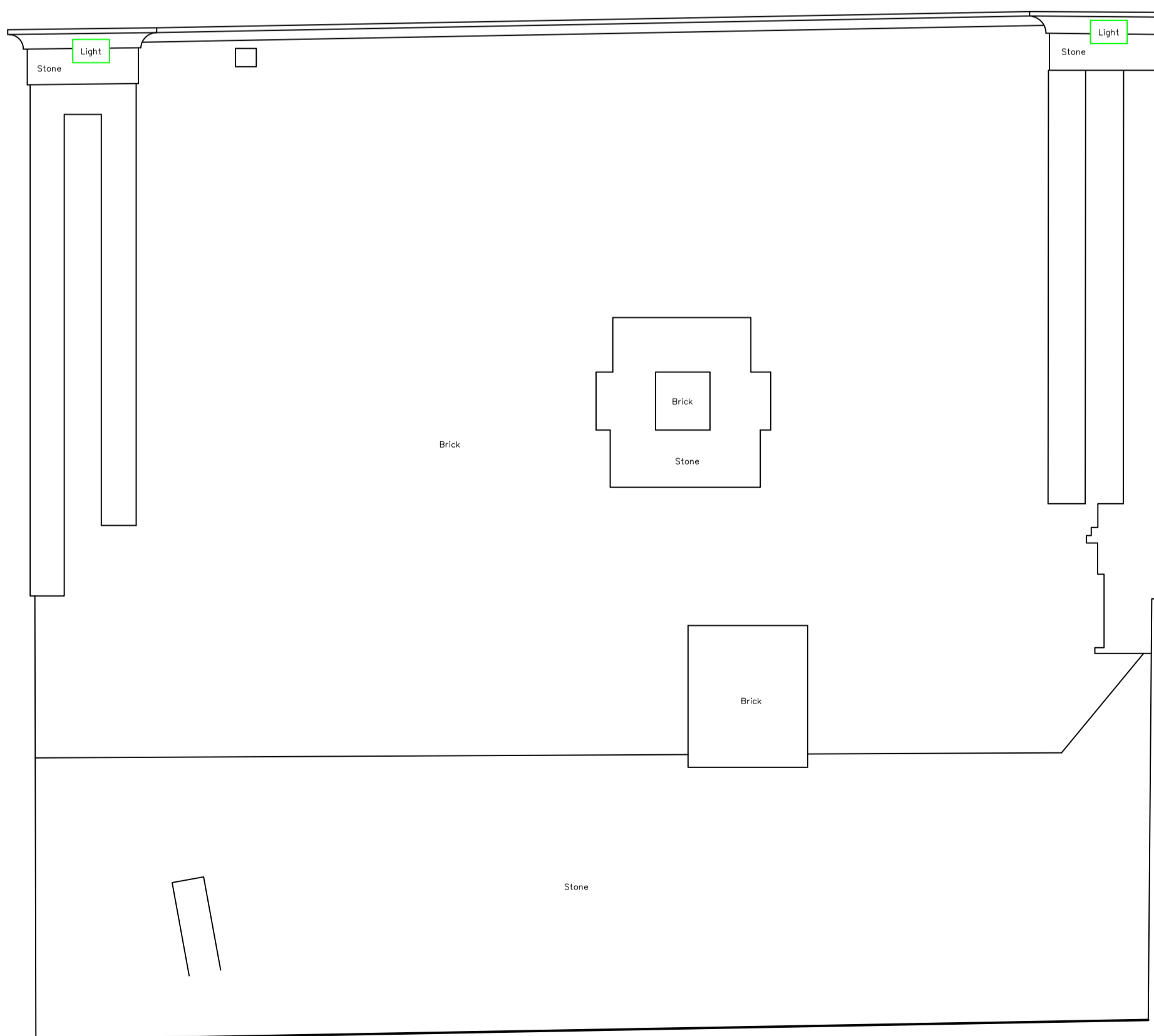
Datum 105.00m

Elevation 2



Datum 105.00m

Elevation 3



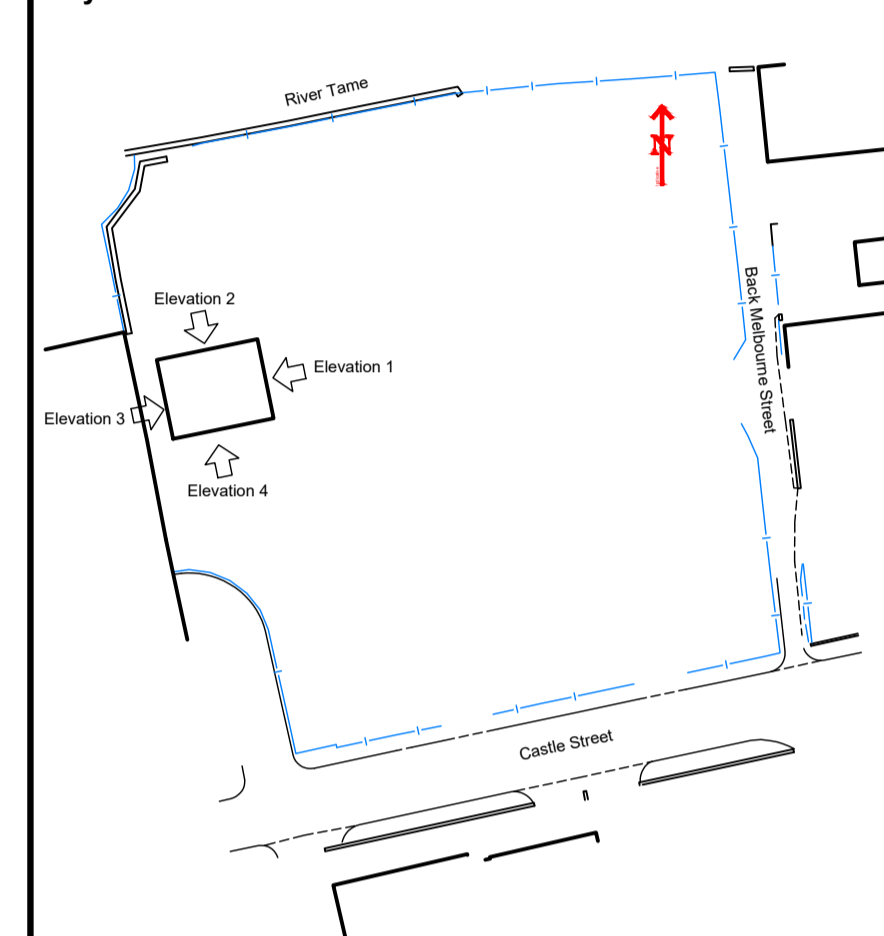
Datum 105.00m

Elevation 4

Building Survey Legend

Beam	Change in Ceiling Height	Change in Floor Surface	Ducting	Partition	Pipe	Wall	Window	Stairs/Ramp	Roof Pitch	Sloping Ceiling	Registration Overlay	Level Above Datum	AB	ACU	Cl	Elec	G	IC	JB	R	RAD	RWP	SP	VP	SI	Arch Apex Height	Under-side of Beam	Ceiling Height	Door Head Height	False Ceiling Height	Head Height	Height	Arch Springing Height	Sill Height	Top of Beam Height	Top of Wall Height	Level Prefix Descriptions	Arch Apex Level	Beam Level	Ceiling Level	Head of Door Level	Duct Level	Evex Level	False Ceiling Level	Floor Level	Head Level	Arch Springing Level	Sill Level	Pipe Level	Ridge Level	Threshold Level	Top of Beam Level	Top of Wall Level
------	--------------------------	-------------------------	---------	-----------	------	------	--------	-------------	------------	-----------------	----------------------	-------------------	----	-----	----	------	---	----	----	---	-----	-----	----	----	----	------------------	--------------------	----------------	------------------	----------------------	-------------	--------	-----------------------	-------------	--------------------	--------------------	---------------------------	-----------------	------------	---------------	--------------------	------------	------------	---------------------	-------------	------------	----------------------	------------	------------	-------------	-----------------	-------------------	-------------------

Key Plan



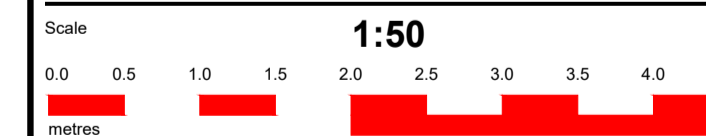
Please note:

Any discrepancy found between an Ordnance Survey benchmark and an OSGB15 computed orthometric height is likely to be due to bench mark subsidence or uplift and, assuming precise GPS survey has been carefully carried out, the orthometric height given by OSGB15 should be considered correct in preference to archive benchmark heights. OSGB15 converts GPS ellipsoid heights to orthometric heights above mean sea level.

Head and Registered Office
Willow Bank House
Old Road
Handforth - Wilmslow
Cheshire SK9 3AZ
Tel: 01625 533444
Fax: 01625 526815
mail@survsys.co.uk
www.survsys.co.uk

Levels are related to OSGB15
Value n/a

Coordinates are related to National Grid (GPS)



The accuracy of this survey is commensurate with the drawing scale specified within the title block. Copyright in this drawing remains with Survey Systems Ltd. Do not scale from this drawing, work to figured dimensions. Check all dimensions on-site. In the event of any discrepancy, please refer query to Survey Systems Ltd.

Client: Rowlinson Construction Ltd

Title:
Elevations
Castle Street
Stalybridge
SK15 1NX

Surveyed PS Drawn AH
Date December 2017 Checked PS
File name 17617B-ELV Revision No. Sheet size A1
Drawing No. SSL:17617B:50:1:1:ELV



© Registered in England No. 1576674